

# Practice 10-1

## Mixed Exercises

If  $\frac{x}{y} = \frac{5}{8}$ , which of the following must be true?

1.  $8x = 5y$

2.  $5x = 8y$

3.  $\frac{y}{x} = \frac{8}{5}$

4.  $\frac{x}{5} = \frac{y}{8}$

5.  $\frac{x}{8} = \frac{y}{5}$

6.  $\frac{x+y}{y} = \frac{13}{8}$

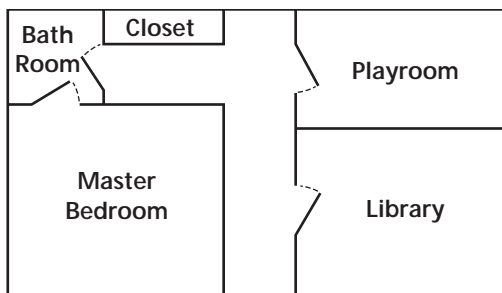
7.  $\frac{x}{y} = \frac{10}{16}$

8.  $\frac{x}{2y} = \frac{5}{4}$

9.  $\frac{x}{x-y} = \frac{5}{3}$

Find the actual dimensions of each room.

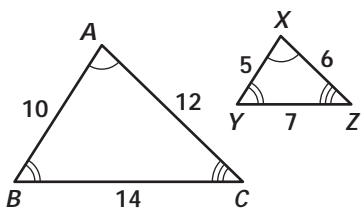
- 10. playroom
- 11. library
- 12. master bedroom
- 13. bathroom
- 14. closet



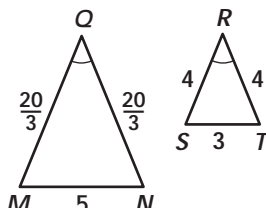
Scale: 1 in. = 16 ft

Are the polygons similar? If they are, write a similarity statement and give the similarity ratio. If they are not, explain.

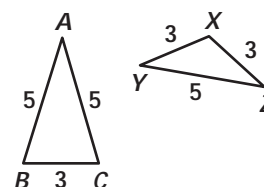
15.



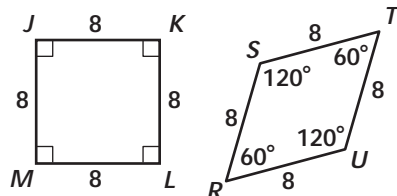
16.



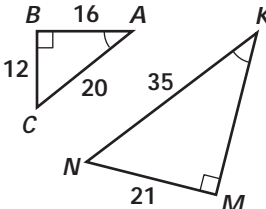
17.



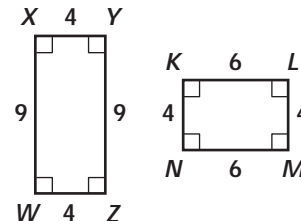
18.



19.



20.



Solve for  $x$ .

21.  $\frac{x}{4} = \frac{9}{3}$

22.  $\frac{6}{x} = \frac{2}{11}$

23.  $\frac{7}{5} = \frac{x}{3}$

24.  $\frac{2}{x} = \frac{x}{32}$

25.  $\frac{3}{11} = \frac{8}{x}$

26.  $\frac{x}{x+2} = \frac{3}{4}$

27.  $\frac{x+1}{x} = \frac{7}{5}$

28.  $\frac{5}{x} = \frac{3}{x+1}$